



海伦哲
HANDLER

Ticker Symbol: 300201

GKJS19

19m Insulated Aerial Work Platform

XUZHOU HANDLER SPECIAL VEHICLE CO.,LTD

#19 Baoliansi Road, Xuzhou Economic Development Zone,
Xuzhou city, Jiangsu province, China

Tel:+86-516-68782715 http: www.xzhlz.com

This brochure is for reference only. We reserve the right to modify the
technical parameters and components as the technology improves.



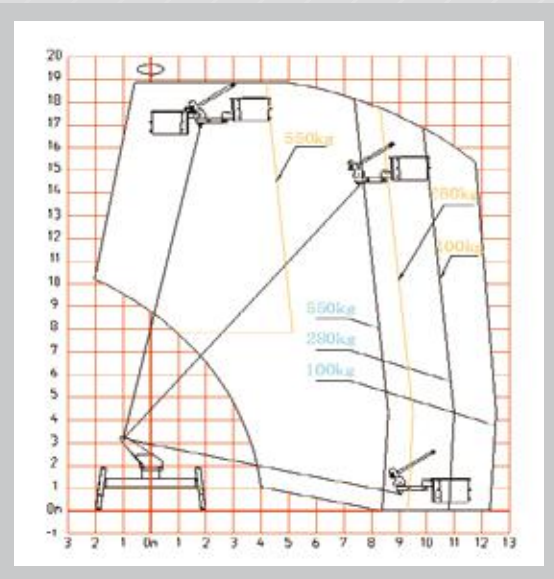
www.xzhlz.com



Main technical parameters

Working range

GKJH20 Insulated aerial work platform			
Item	Description	Unit	Data
Dimension	Total length	mm	6995
	Total width	mm	2250
	Total height	mm	3650
Weight	Cab personnel capacity		3
	Total weight	kg	9450
Main Performance	Bucket rated load capacity	kg	280
	Max. working height	m	18.8
	Max. working radius	m	11
	Bucket rotation	°	± 90
	Bucket lift height	m	0.6
	Max. lift weight	kg	490
	Rated voltage	kv	35



Main configuration

Two-man FRP bucket, liner insulation rating reach to 50 kv

Three telescopic booms+jib

ISUZU Chassi:
QL110ANKAY

Outriggers :
H type , can be operated separately

- **Insulation:** 4m insulated boom+0.4m insulated jib
- **Leveling system:** Hydraulic leveling;
- **Operation:** Two sets of control systems for turret and bucket
- Boom-outrigger interlock;
- Emergency electro-hydraulic pump;
- Cylinder retraction limit device;
- Emergency stop;
- Driving and taking force interlock device;